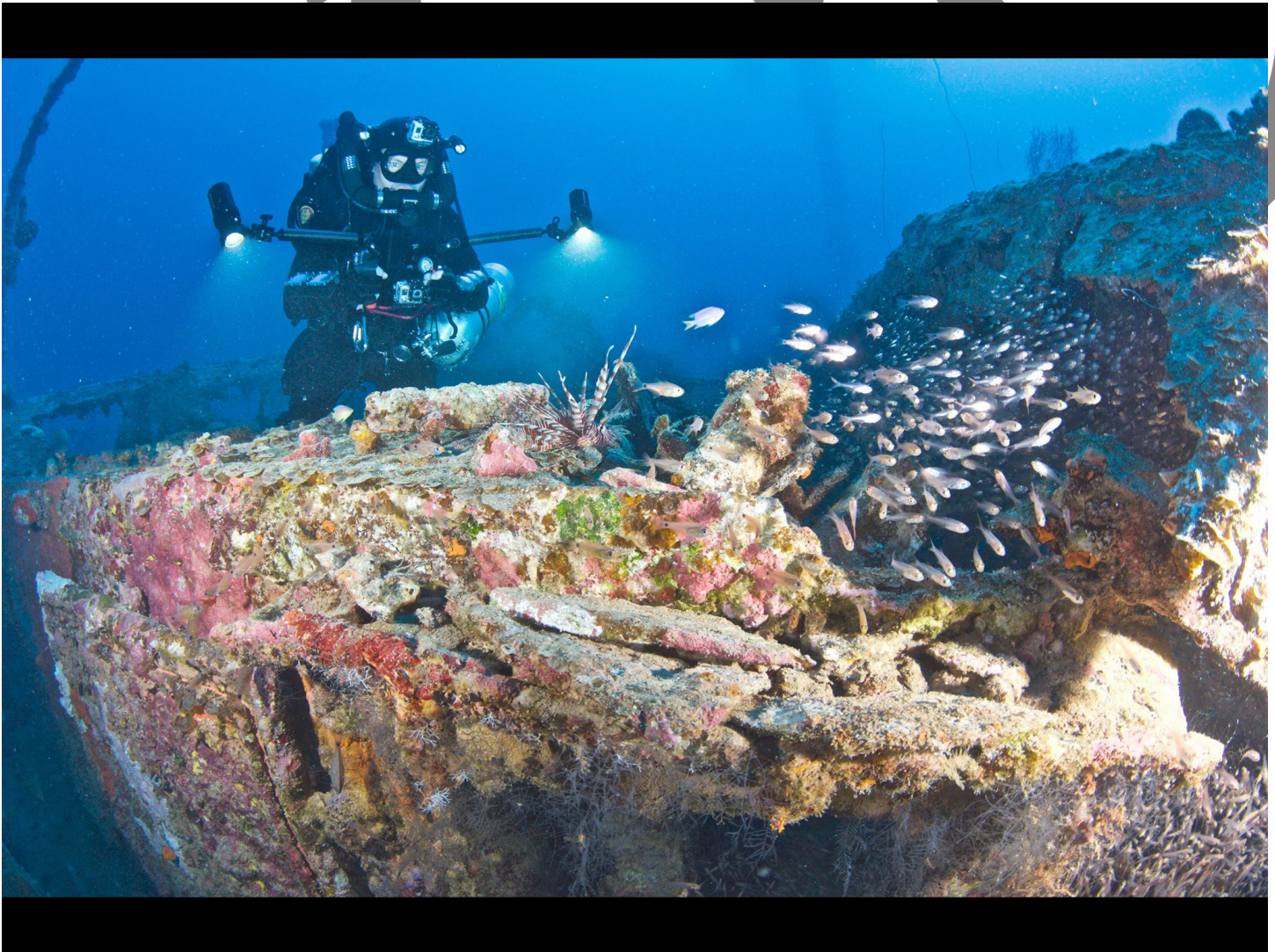


My name is Rob Allen, I am based in the UK, I purchased my Classic KISS in December 2005, unit number 213, I qualified the MOD1 in February 2006 and MOD3 in November of the same year and have been regularly diving with it each year ever since. Most of my diving is Tec diving using Trimix and diving the wrecks on the South Coast of the UK. In addition, I also take my Classic KISS to overseas destinations such as the Red Sea even on Scuba trips as the unit is so nice to dive and you can get real close to wildlife.

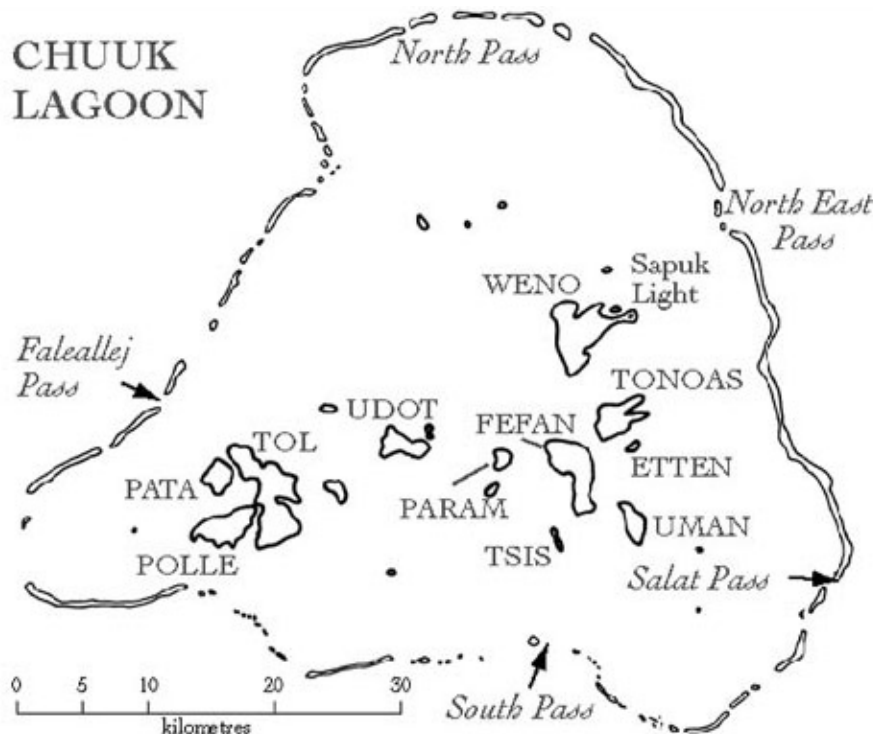


One of the main reasons I chose the Classic KISS was the KISS principal of simplicity (less to go wrong) I really appreciate this as a professional mechanical engineer. The ability to be able to carry out maintenance at home or in the field rather than requiring sending the unit back to the manufacture as is the case with most other manufacture of rebreathers due to their complexity especially the electronics is a great advantage. Interestingly when I was training on the MOD3 course the Instructor was using an electronic driven rebreather and had to abandon one of our qualifying dives due to failure of his unit.

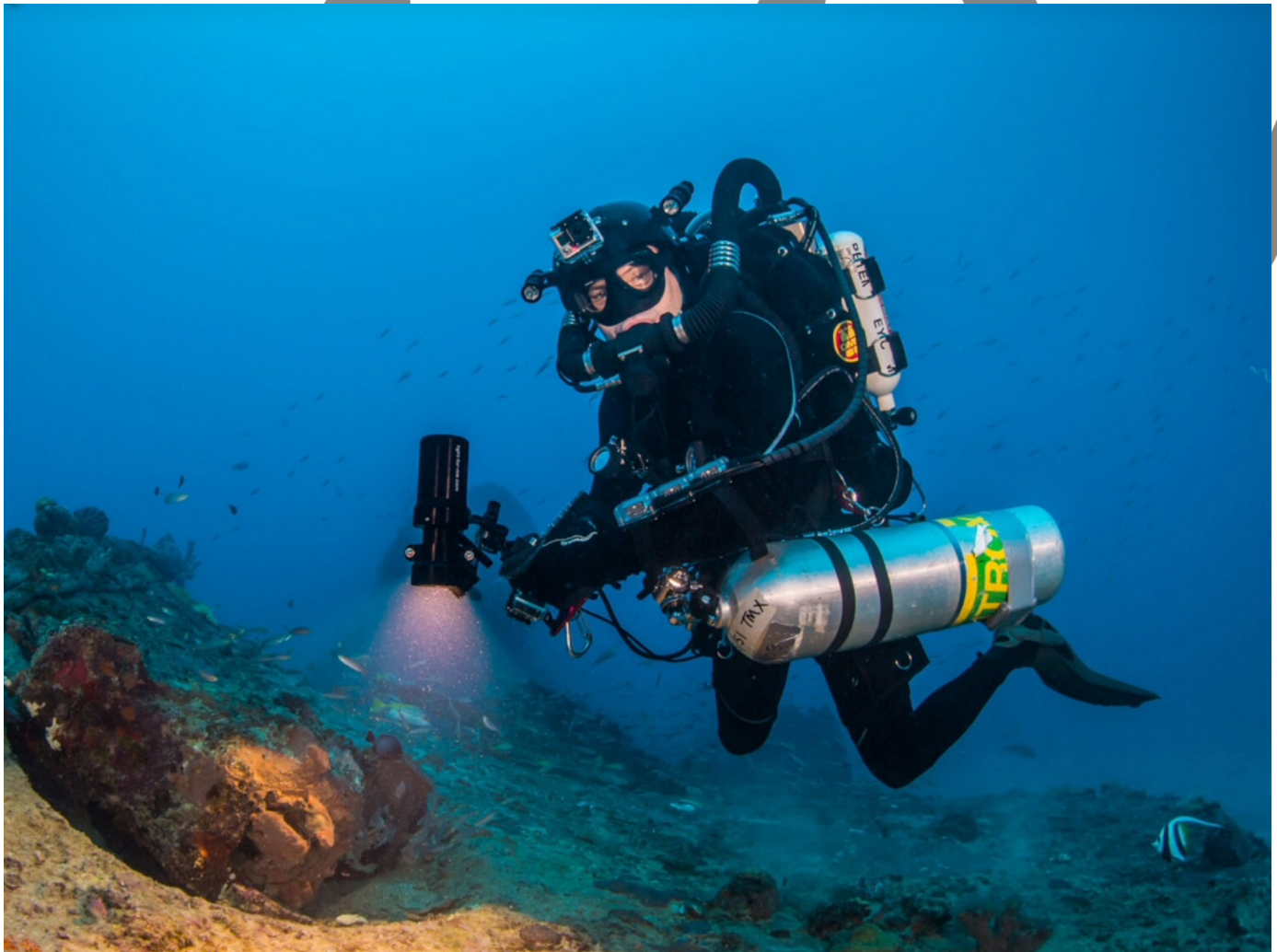
The other reason I chose the Classic was to dive the wrecks of Truk (Chuuk) Lagoon as this was a destination I've wanted to dive since taking up diving in the early 80's. Due to the remoteness of this destination, a reliable simple rebreather would be most suitable. In addition, I required a unit that was lightweight as weight is a premium on airlines when you need to take so much equipment etc. to support this type of expedition.

In 2014 I turned 50 years of age and to mark it I booked to dive the wrecks of Truk Lagoon as a once in a life time trip, this was due to the high cost of such a trip. In November of that year I took my Classic KISS and dived twice a day for 12 days of awesome Tec diving. Even though I took plenty of spares for the Classic I didn't need to use any as the unit worked fantastic and didn't let me down at all. However, other divers on the trip had numerous issues with their rebreather units, the main issues were problems with electronics such as handsets and solenoid not functioning correctly, therefore numerous divers was not able to dive at some point during the trip.

The trip in 2014 was awesome as it is indeed the best wreck dive destination on the planet as there are so many wrecks you just cannot dive all of them in 12 days; in addition, you really want to dive some of the wrecks again. The water temperature is 30 degrees (86 f) from the top to the bottom, the visibility underwater is amazing, and to top is all the wrecks are living reefs of coral and fish, including Turtles and Sharks. Therefore, after this trip I decided it was not a once in a lifetime trip as I would dive Truk again.



I have now just returned from another 12 days of diving the wrecks of Truk Lagoon (November 2016) and as before I dived them using my Classic KISS and as the last trip in 2014 the unit worked perfectly and did not let me down. Transporting my Classic KISS was easy as it all fitted in a standard hard luggage case and came in at 23 kg (50 lb) although I carried the 1st stages in my carry-on luggage. I had to endure three flights from the UK to Truk over two days, we flew from Heathrow to South Korea to Guam and finally Truk. The Truk landing is an experience due to the very short runway!



I did notice that other divers with different makes of rebreathers struggled with weight limits and had to break down their rebreather into parts. In addition, a few rebreathers were broken during the transportation of the three flights; I have taken my Classic regularly on flights each year and found it to be very robust.

My Classic KISS is now in its 11th year of continued use and with just carrying out the regular maintenance as recommended by KISS my unit continued to perform perfectly in extreme environments. The deepest wrecks of the trip were almost 70 m (230 feet), we were regularly diving around 3 hour run times, and diving twice a day, obviously the second dive of the day was often shallower at around 35 m (115 feet) and shorter run times of around 90 minutes. The deco stops for the deep wrecks were almost 2 hours long so I was very glad I had an underwater MP3 player to help with the boredom.

The only maintenance I carried out on my KISS was to change the sofnolime every day and rinse out the loop hose with drinking water and after 6 days I also replaced the batteries in the triple displays.

Due to the remote location, Trimix was very expensive; to combat this we had a system where the Trimix bailout cylinder (80 cuft) was plugged into the Diluent manifold via the off-board system (KISS sells these). To keep things simple the Diluent cylinder on the unit with air, was connected to my wing inflation and not the Diluent manifold. Over the 12 days of diving twice a day only around 90 Bar (1160 psi) of Trimix was used from the bailout 80 cuft cylinder, this was topped up a few times over the 12 days to ensure it still was adequate for bailout purposes.





We also had a system of bail out drops cylinders, as all of the dives were using a shot line to the wrecks and our boat was moored on the shot line, we hung under our boat a 100% Oxygen cylinder at 6 m (20 feet) and a 50% Nitrox cylinder at 21 m (69 feet). We also carried one 50% cylinder to the bottom of the shot line and left it there and we tagged on and off as the last diver on the wreck would then carry it back to the boat. This system worked well as we only then required to take our Trimix bailout cylinder on the dive.

I am so glad I chose a KISS as many other manufactures of rebreathers on the trip were failing just as they did in 2014 and again for the same reasons of issues with the electronics. This year seemed worse as more manufactures are adding more complex to their systems such as temperature sticks, CO2 alarms and flight check systems. The KISS principal of simplicity works and really helps to ensure the rebreather preforms time and time again which is certainly beneficial when you want to dive as much as possible to get the most out of an expensive expedition and have looked forward too for so long.

As I mentioned previously I no longer consider this trip to be once in a lifetime, in fact I have already booked again to come back in 2018. Once again I will be diving my trusted Classic KISS as it's my rebreather of choice for trusted reliable dependency which I cannot highly recommend enough, so thank you KISS for continually help make my dive destinations a pleasure to dive.